



1



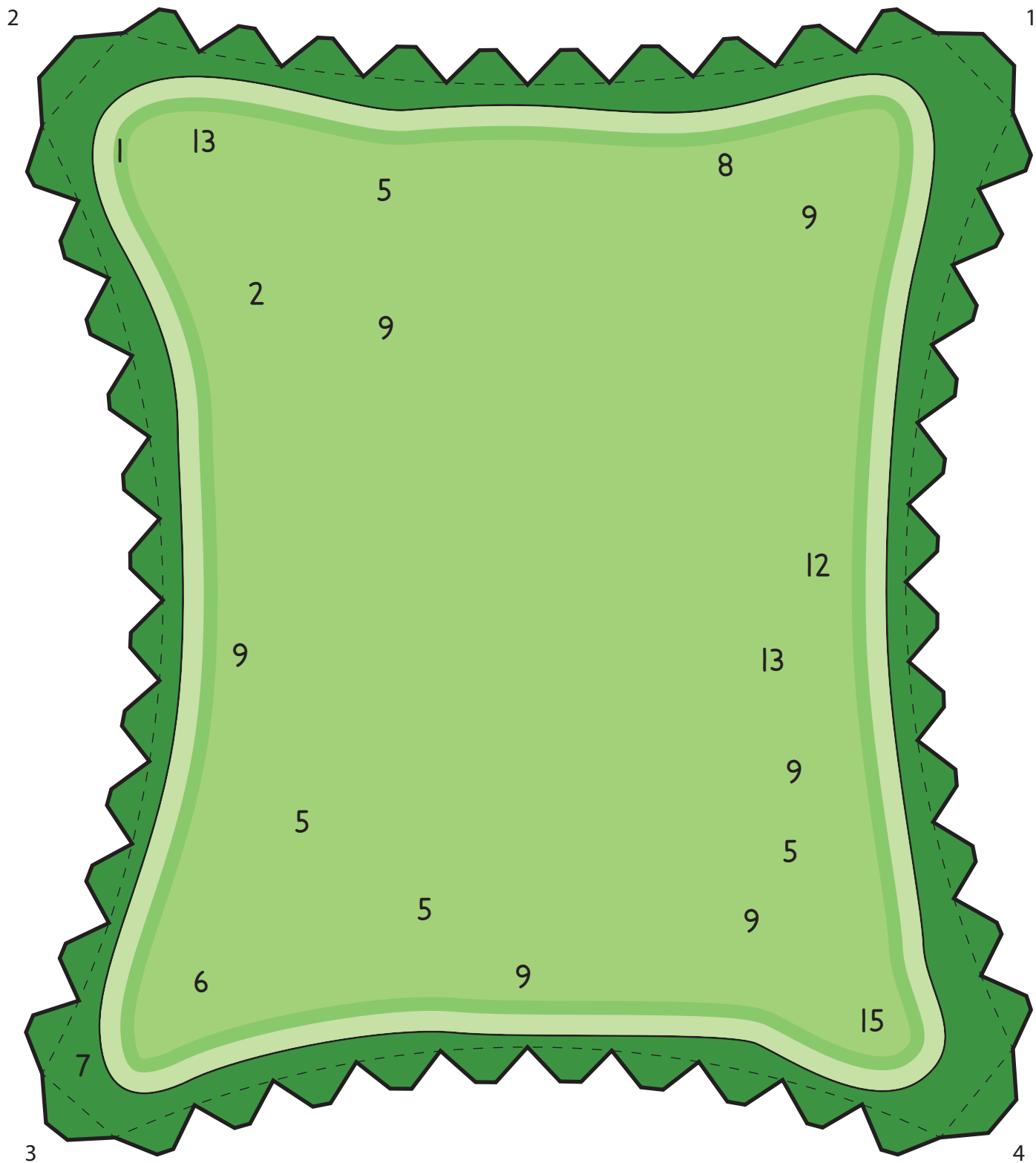
2



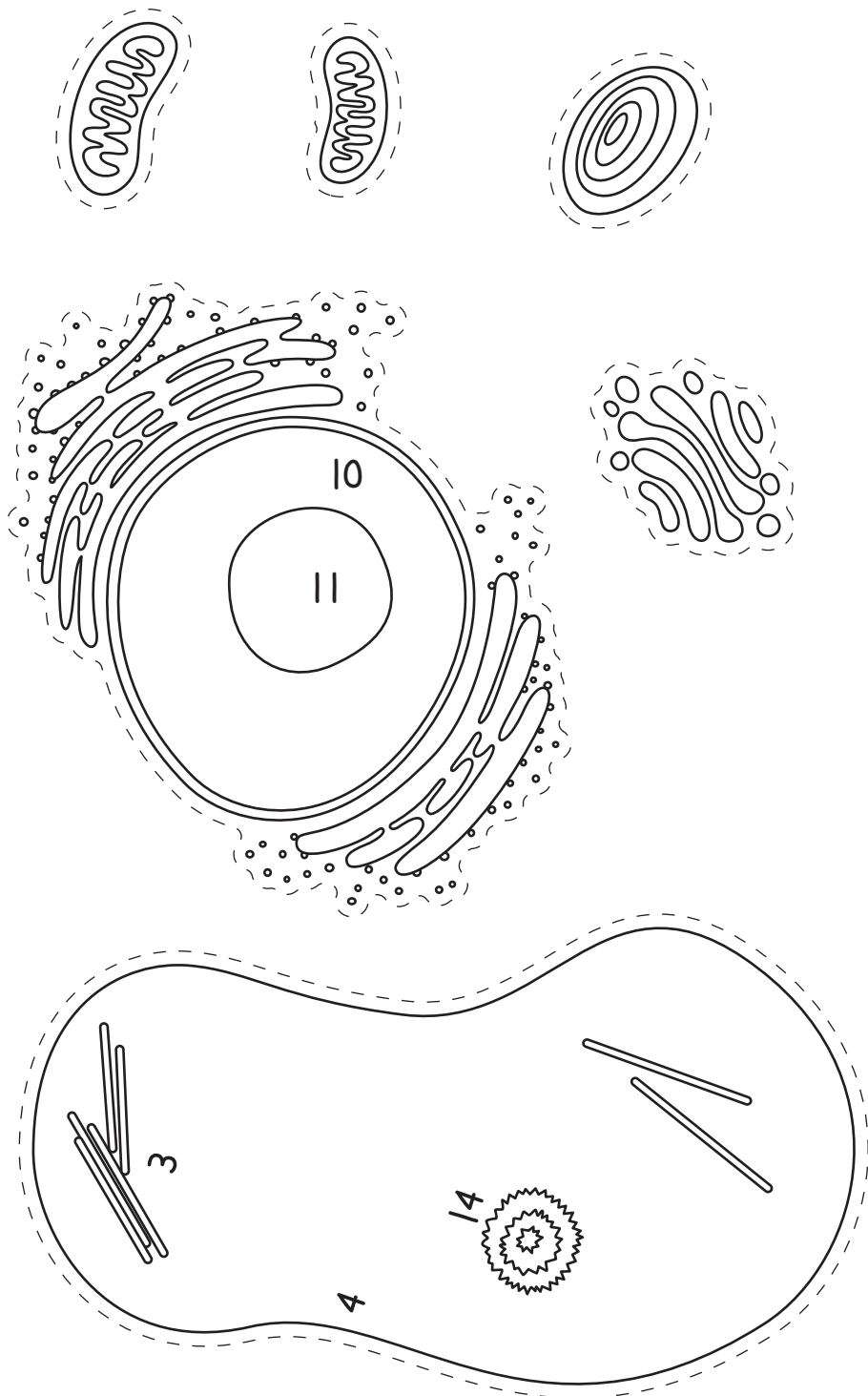
3



4

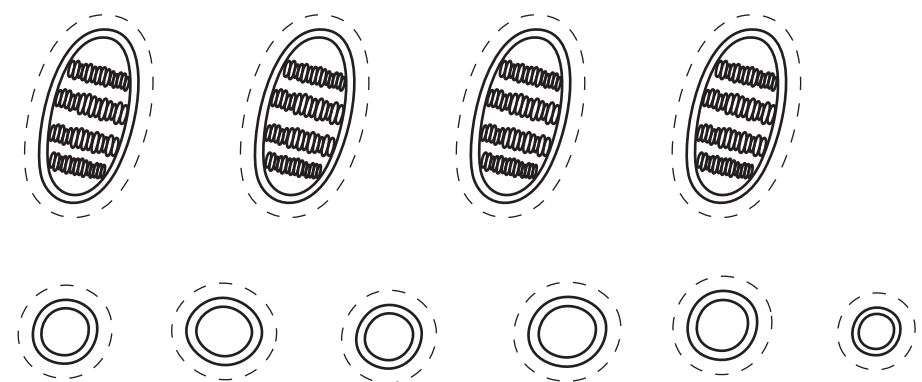


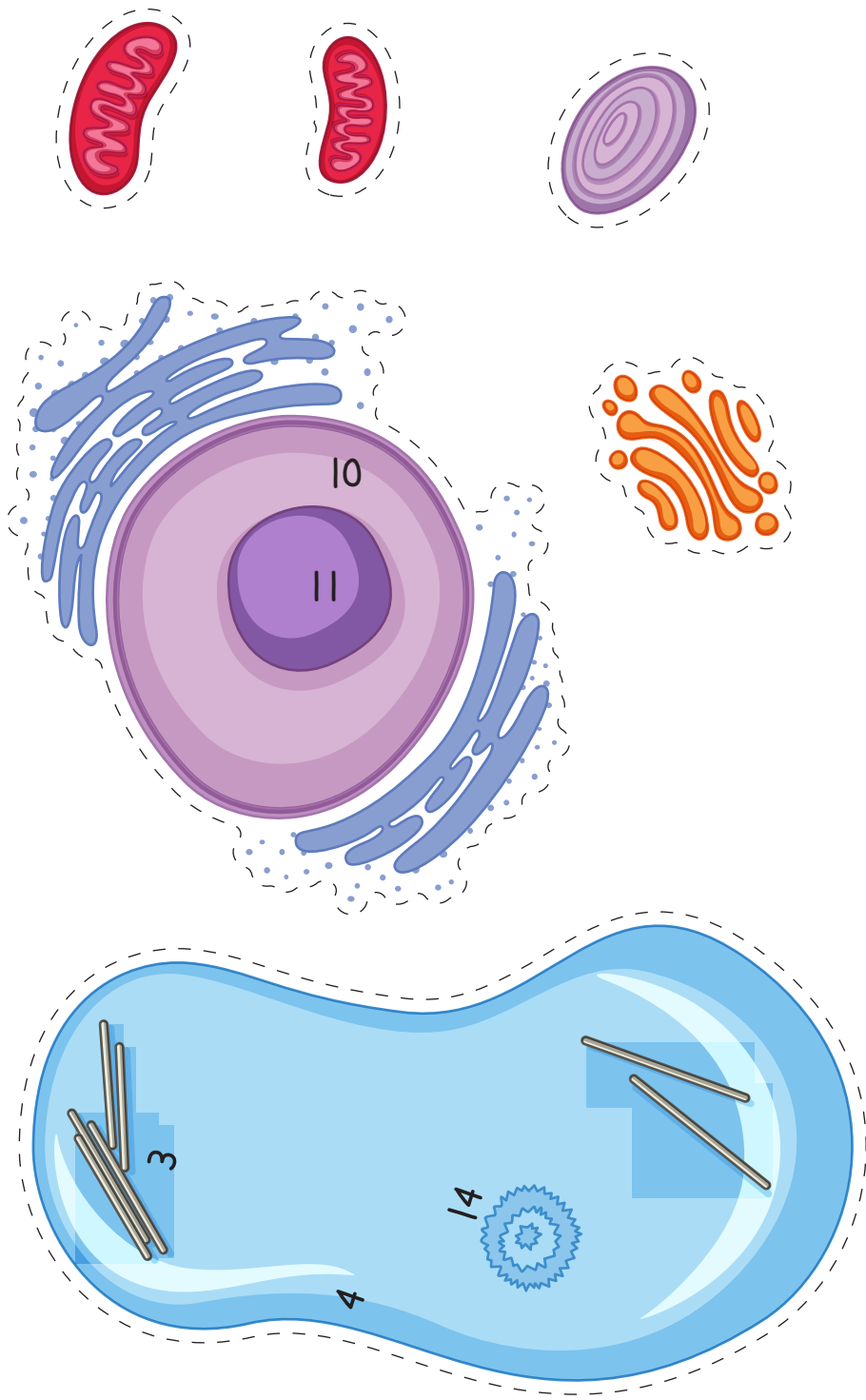




- 1 Cell Membrane**
- 2 Amyloplast**
- 3 Raphide Crystal**
- 4 Vacuole**
- 5 Chloroplast**
- 6 Golgi Apparatus**
- 7 Cell Wall**

- Ribosomes 8**
- Peroxisome 9**
- Nucleus 10**
- Nucleolus 11**
- Endoplasmic reticulum 12**
- Mitochondrion 13**
- Druse Crystal 14**
- Cytoplasm 15**





- 1 Cell Membrane**
- 2 Amyloplast**
- 3 Raphide Crystal**
- 4 Vacuole**
- 5 Chloroplast**
- 6 Golgi Apparatus**
- 7 Cell Wall**

- Ribosomes 8**
- Peroximose 9**
- Nucleus10**
- Nucleolus 11**
- Endoplasmic 12
reticulum**
- Mitochondrion 13**
- Druse Crystal 14**
- Cytoplasm 15**

